

CODENAME

CORNERSTONE

BANER



WHAT THEY
DON'T TEACH YOU
**AT BUSINESS
SCHOOLS.**

SUCCESS = LOCATION

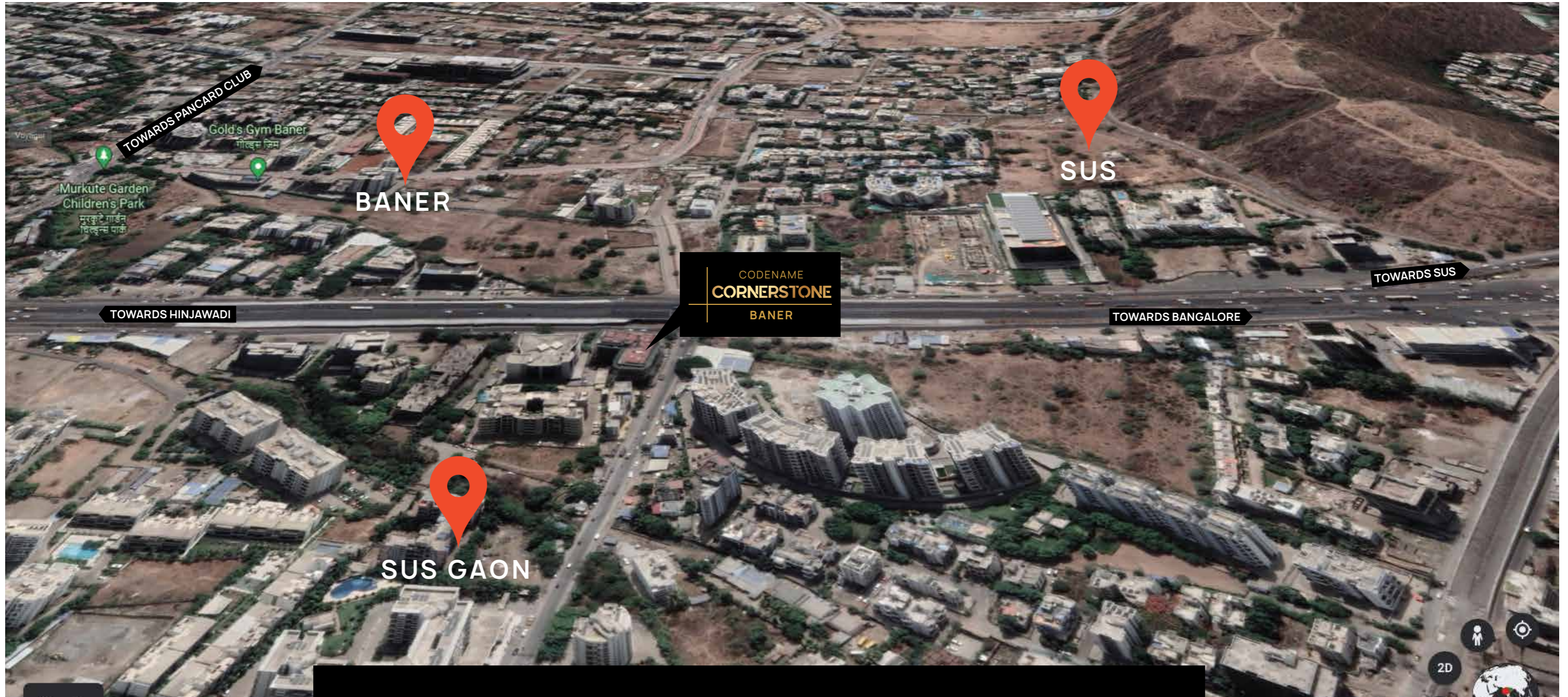
THE CORNERSTONE OF SUCCESS

Location remains the leading factor for success of a business despite the rise of technology, virtual communication, and cloud business. The address also influences the way a business is perceived.

"MMT is an affluent and influential business address"

An aerial photograph of a city street intersection. A black callout box with gold text is positioned over the intersection. The text inside the box reads "CODENAME CORNERSTONE BANER". A gold L-shaped graphic element is overlaid on the intersection, with one line extending vertically and the other horizontally, meeting at the corner of the intersection.

CODENAME
CORNERSTONE
BANER



Ideally, you want to be where your customers are and make it as convenient as possible for them to visit you. MMT's easy reach gives them a great incentive to visit you, which in turn results in greater footfall for your business.

"MMT is the future commercial hotspot of Pune"

LOCATION MAP



- 1 Proposed Metro Station
- 2 Proposed Metro Station
- 3 Bitwise
- 4 Hyundai Motors
- 5 Tata Motors
- 6 Renault
- 7 Kia Motors
- 8 Xoriant
- 9 T-Systems
- 10 Mercedes benz Showroom
- 11 Orchid Hotel
- 12 Balewadi Highstreet
- 13 Westside
- 14 NICMAR
- 15 Orchid School
- 16 Cummins



Mohanlal Bishnoi
BUILDERS & DEVELOPERS

ABOUT THE DEVELOPER

Mohanlal Bishnoi Builders & Developers thrive on the idea of delivering unparalleled real estate to our clients. We have been creating top-drawer commercial & urban living spaces for more than a decade. We develop projects keeping urban consumers in mind – our projects are full of convenient amenities & smart spaces.

In the last few years, we have delivered approximately 5 Lacs sq Ft in Pune & Nashik. By adapting & growing with modern-day trends, we deliver consistent, robust Grade-A projects to our clients and transform the city's skyline.

With our focus on technological advancement, avant-garde engineering, and state-of-the-art specifications, we aim to create contemporary commercial spaces for businesses.

THE CORNERSTONE OF SUCCESS

Situated in Baner, Pune – Maruti Millennium Tower is a contemporary commercial real estate project specifically designed keeping modern day entrepreneur spirit in mind. Once constructed, the Maruti Millennium Tower will be an iconic commercial project in Baner.

The project is situated on the Mumbai-Pune Expressway and enjoys impeccable connectivity to Balewadi Phata, Hinjawadi, Wakad, Aundh, Kothrud etc. With the development of multiple metro stations & existing road networks, connectivity from MMT to all corners of the city will be seamless. With large companies and continuous development in the vicinity, the project offers excellent opportunities for end-users and far-sighted investors alike.

WHAT YOUR
**HIGHLY PAID
CONSULTANT**
WOULD NEVER TELL.


**LOCATION ADVANTAGE
= COMPETITIVE EDGE**

LOCATION ADVANTAGE



- Main Highway Touch Project.
- Three Side Road connectivity.
- Multi location Connectivity to Hinjawadi, Aundh, Baner, Bavdhan, Wakad, Pashan, Balewadi etc.
- Proximity to IT Parks, and CBD.

HINJEWADI IT PARK



WHAT **SUCCESS**
GURUS WILL
CONFORM TO

SMART OFFICE
= SMART STARTUP



CODENAME
CORNERSTONE
BANER

CORE OFFICE - BELOW 600 SQ.FT.



- Highest floor to ceiling height.
- 100% DG Backup for all Offices
- Dedicated Valet parking
- Exclusive business center & Cafeteria





WHAT **BRANDING**
AGENCIES

WILL NEVER
HAPPILY ADMIT

PRIME LOCATION
= BRAND VALUE

CORPORATE OFFICE - ABOVE 600 SQ.FT.



- A Grade construction quality
- Unitized Glass façade
- Construction in full swing
- Early possession





WHAT **BONUSES**
& INCENTIVE
PROGRAMS
WILL NEVER BUY.

GREATER RECREATION
= IMPROVED PRODUCTIVITY

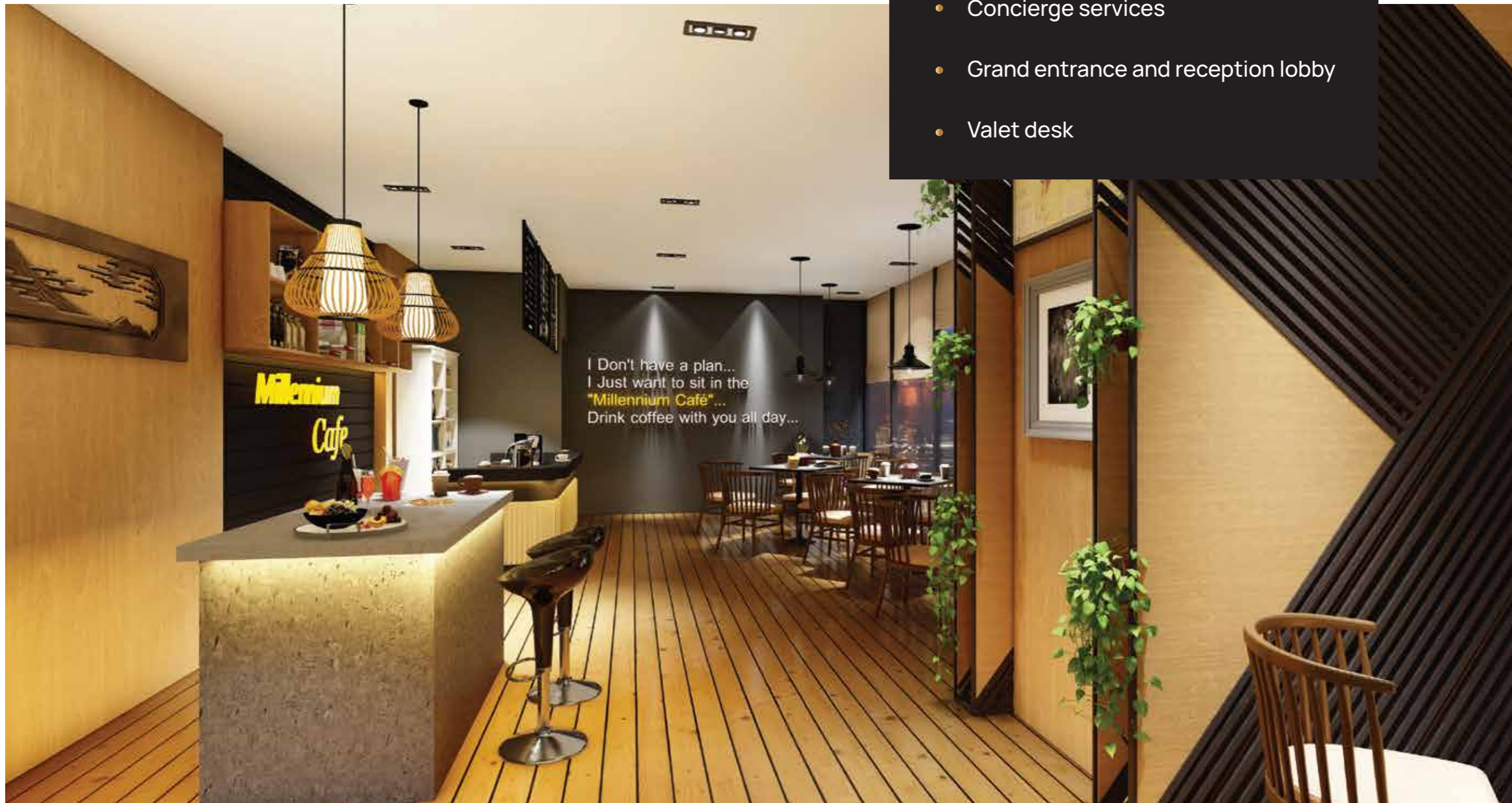
CODENAME
CORNERSTONE

BANER



RECREATION/ BUSINESS CENTER

- Rooftop cafeteria
- Dedicated business center
- Concierge services
- Grand entrance and reception lobby
- Valet desk



PROJECT SPECIFICATIONS



Double Heighted
Entrance Lobby



Common
Receptionist



Valet Desk



Common
Conference Room



Executive Lounge



Commercial
Printing Facility



Multi-cuisine
Cafeteria

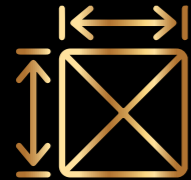


100% Power
Backup



Common
Meeting Room

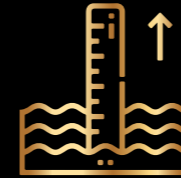
TECHNICAL SPECIFICATION



Total Buildable Area
2,00,000 Sq. Ft Approximately



High-Speed Elevators
3 Passenger elevators



Levels
3 Basement Parkings
+ Ground & First Floor
+ Two-Wheeler Parkings
+ Office Floors



Manned Security
Security stations at main entry
and exit points, parking and
building premise.



**High Speed Internet
With Multiple ISPs**
2,00,000 Sq. Ft Approximately



Vehicular Parking
Provision for Dedicated
and Common Parkings



Fire Safety
Smoke detectors have been considered
in lift, lobbies, electrical rooms and
majority of the common areas



Security System
CCTV Cameras in the entire
premises along with dedicated
monitoring team.



Floor to Floor Height
3.6 Meters



Typical Floor Plate
12,000 Sq. Ft. Approx



**Dedicated Restrooms
And Service Areas**

ROOFTOP CAFETERIA & BUSINESS CENTER



FREE ZONE

LANDSCAPED
GARDEN

CAFETERIA

GAZEBO

FLOOR PLANS

GROUND FLOOR PLAN



1ST FLOOR PLAN

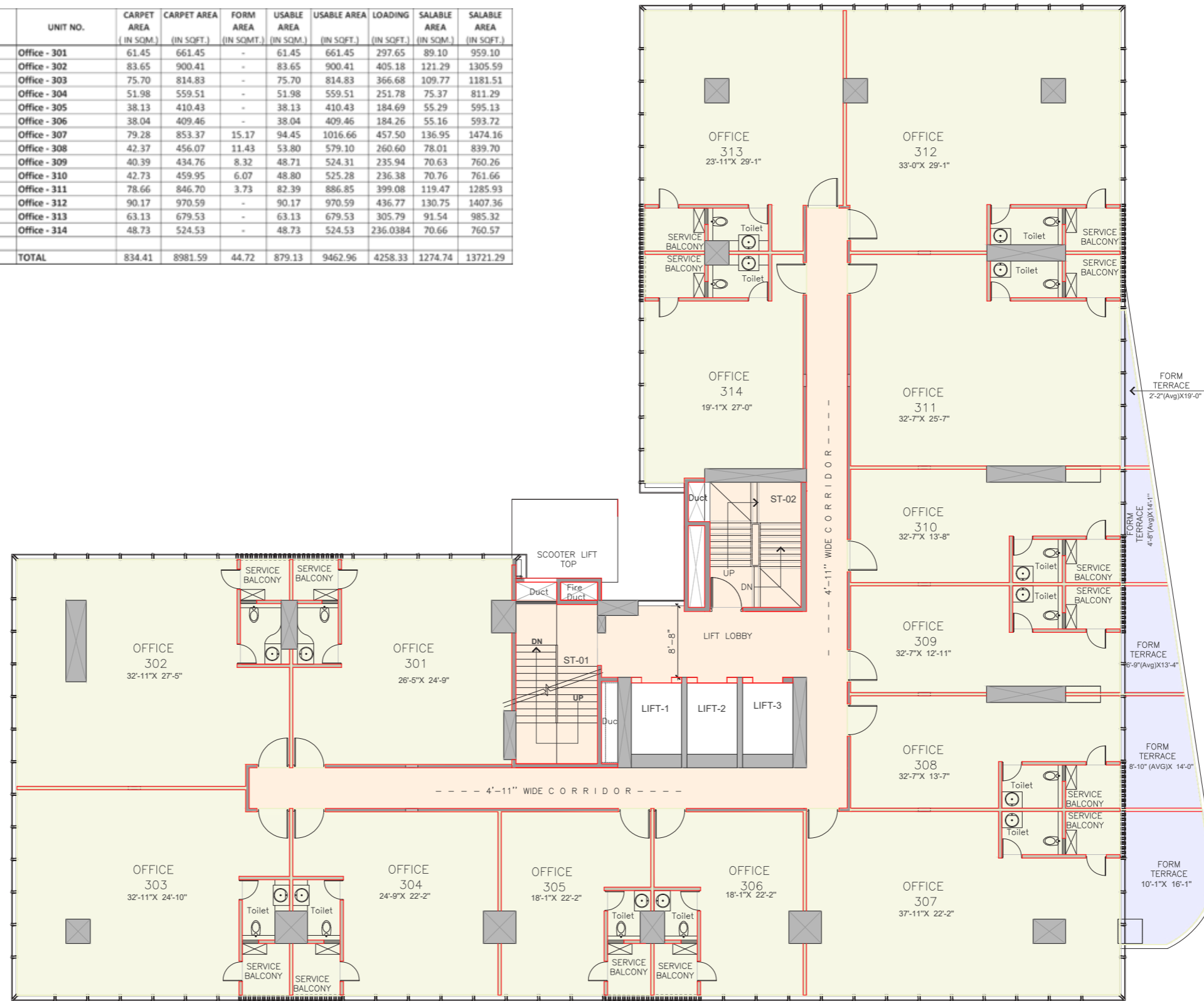
Sr. No.	FLOOR	UNIT NO.	CARPET AREA (IN SQM.)	CARPET AREA (IN SQFT.)	FORM AREA (IN SQMT.)	USABLE AREA (IN SQM.)	USABLE AREA (IN SQFT.)	LOADING AREA (IN SQFT.)	SALABLE AREA (IN SQM.)	SALABLE AREA (IN SQFT.)
2)	First floor	Showroom - 1	153.75	1654.97	-	153.75	1654.97	827.48	230.63	2482.45
		Showroom - 2	108.21	1164.77	-	108.21	1164.77	582.39	162.32	1747.16
		Showroom - 3	79.80	858.97	-	79.80	858.97	429.48	119.70	1288.45
		Shop - 01	43.50	468.23	-	43.50	468.23	234.12	65.25	702.35
		Shop - 02	43.46	467.80	-	43.46	467.80	233.90	65.19	701.71
		Shop - 03	44.41	478.03	-	44.41	478.03	239.01	66.62	717.04
		Shop - 04	43.97	473.29	-	43.97	473.29	236.65	65.96	709.94
		Shop - 05	26.57	286.00	-	26.57	286.00	143.00	39.86	429.00
		Shop - 06	26.58	286.11	-	26.58	286.11	143.0536	39.87	429.16
		Office-01	14.33	154.25	-	14.33	154.25	69.41165	20.78	223.66
		TOTAL	584.58	6292.42	-	584.58	6292.42	3138.50	876.15	9430.92

FLOOR	UNIT NO.	CARPET AREA (IN SQM.)	CARPET AREA (IN SQFT.)	FORM AREA (IN SQMT.)	USABLE AREA (IN SQM.)	USABLE AREA (IN SQFT.)	LOADING AREA (IN SQFT.)	SALABLE AREA (IN SQM.)	SALABLE AREA (IN SQFT.)		
3)	Ground floor + First floor	Showroom - 1	394.95	4251.23	-	394.95	4251.23	2125.616	592.42	6376.85	
		Showroom - 2	232.91	2507.04	-	232.91	2507.04	1253.522	349.37	3760.56	
		Showroom - 3	173.04	1862.60	-	173.04	1862.60	931.30	259.56	2793.90	
		Shop - 01	95.01	1022.69	-	95.01	1022.69	511.34	142.52	1534.03	
		Shop - 02	95.01	1022.69	-	95.01	1022.69	511.34	142.52	1534.03	
		Shop - 03	97.07	1044.86	-	97.07	1044.86	522.43	145.61	1567.29	
		Shop - 04	96.26	1036.14	-	96.26	1036.14	518.07	144.39	1554.21	
		Shop - 05	60.90	655.53	-	60.90	655.53	327.76	91.35	983.29	
		Shop - 06	60.95	656.07	-	60.95	656.07	328.03	91.43	984.10	
				TOTAL	1306.10	14058.85	-	1306.10	7029.42	1959.15	21088.27



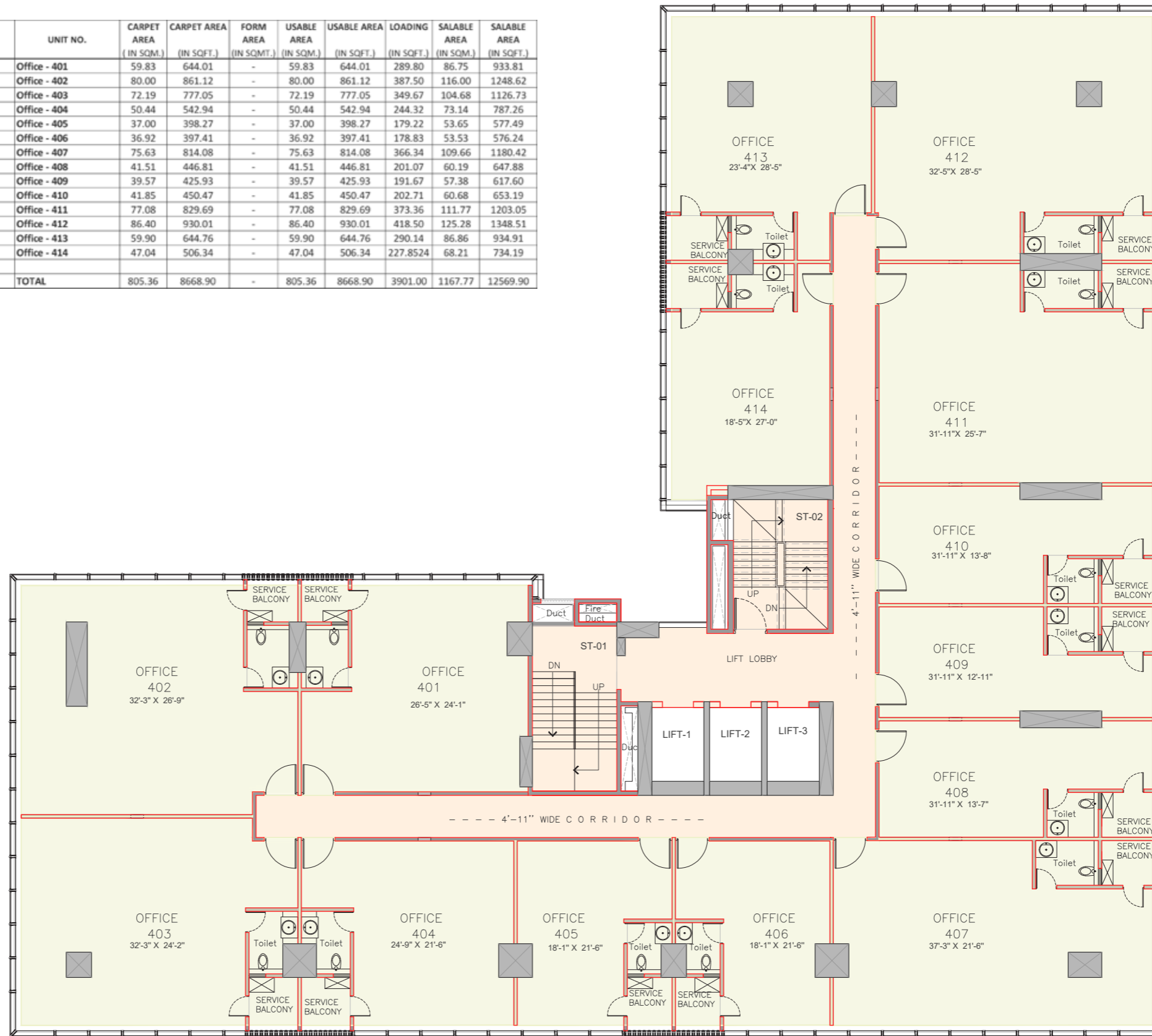
3RD FLOOR PLAN

SR. NO.	FLOOR	UNIT NO.	CARPET AREA (IN SQM.)	CARPET AREA (IN SQFT.)	FORM AREA (IN SQMT.)	USABLE AREA (IN SQM.)	USABLE AREA (IN SQFT.)	LOADING (IN SQFT.)	SALABLE AREA (IN SQM.)	SALABLE AREA (IN SQFT.)
4)	Third floor	Office - 301	61.45	661.45	-	61.45	661.45	297.65	89.10	959.10
		Office - 302	83.65	900.41	-	83.65	900.41	405.18	121.29	1305.59
		Office - 303	75.70	814.83	-	75.70	814.83	366.68	109.77	1181.51
		Office - 304	51.98	559.51	-	51.98	559.51	251.78	75.37	811.29
		Office - 305	38.13	410.43	-	38.13	410.43	184.69	55.29	595.13
		Office - 306	38.04	409.46	-	38.04	409.46	184.26	55.16	593.72
		Office - 307	79.28	853.37	15.17	94.45	1016.66	457.50	136.95	1474.16
		Office - 308	42.37	456.07	11.43	53.80	579.10	260.60	78.01	839.70
		Office - 309	40.39	434.76	8.32	48.71	524.31	235.94	70.63	760.26
		Office - 310	42.73	459.95	6.07	48.80	525.28	236.38	70.76	761.66
		Office - 311	78.66	846.70	3.73	82.39	886.85	399.08	119.47	1285.93
		Office - 312	90.17	970.59	-	90.17	970.59	436.77	130.75	1407.36
		Office - 313	63.13	679.53	-	63.13	679.53	305.79	91.54	985.32
		Office - 314	48.73	524.53	-	48.73	524.53	236.0384	70.66	760.57
		TOTAL	834.41	8981.59	44.72	879.13	9462.96	4258.33	1274.74	13721.29



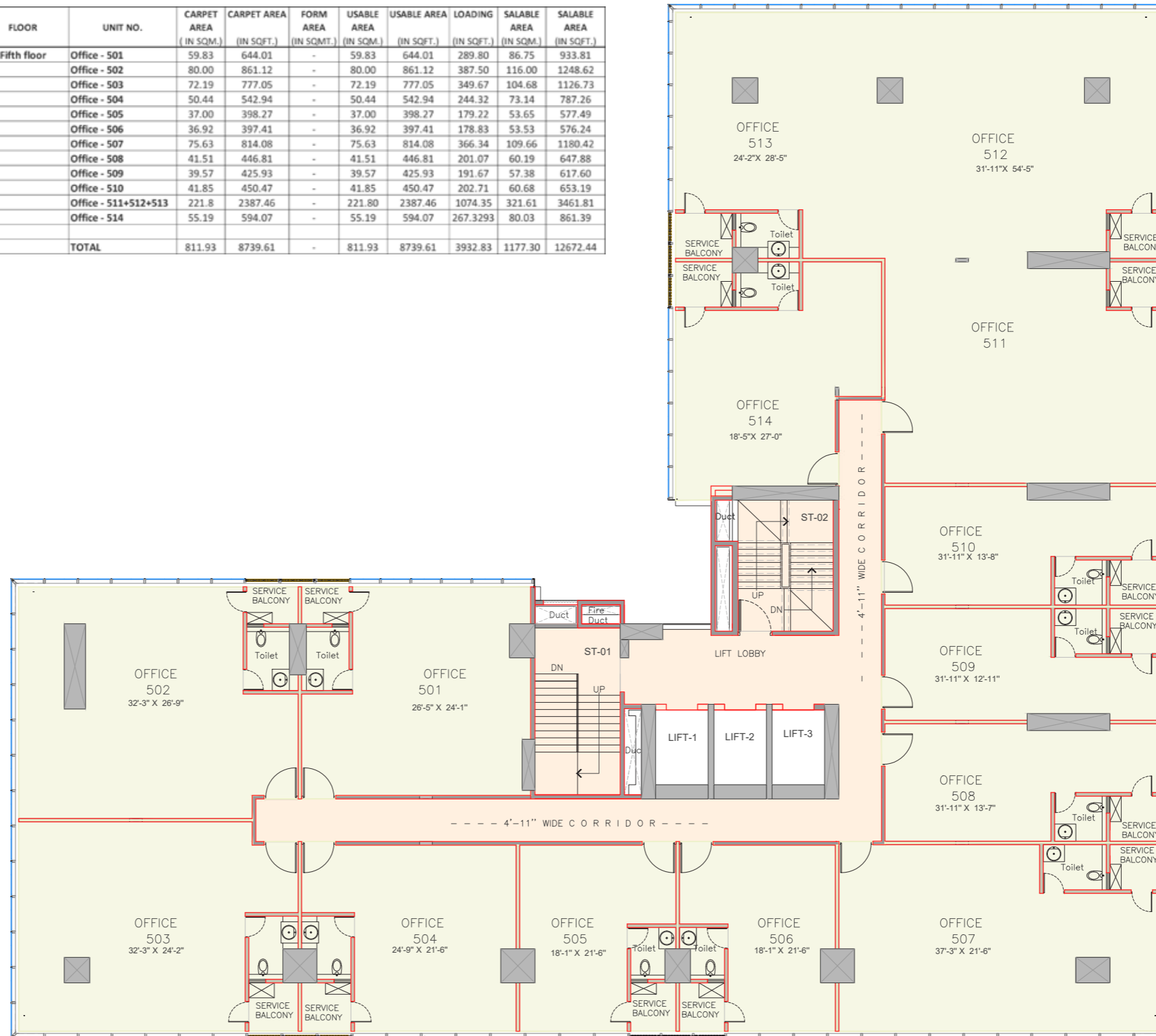
4TH FLOOR PLAN

Sr. No.	FLOOR	UNIT NO.	CARPET AREA (IN SQM.)	CARPET AREA (IN SQFT.)	FORM AREA (IN SQMT.)	USABLE AREA (IN SQM.)	USABLE AREA (IN SQFT.)	LOADING (IN SQFT.)	SALABLE AREA (IN SQM.)	SALABLE AREA (IN SQFT.)
5)	Fourth floor	Office - 401	59.83	644.01	-	59.83	644.01	289.80	86.75	933.81
		Office - 402	80.00	861.12	-	80.00	861.12	387.50	116.00	1248.62
		Office - 403	72.19	777.05	-	72.19	777.05	349.67	104.68	1126.73
		Office - 404	50.44	542.94	-	50.44	542.94	244.32	73.14	787.26
		Office - 405	37.00	398.27	-	37.00	398.27	179.22	53.65	577.49
		Office - 406	36.92	397.41	-	36.92	397.41	178.83	53.53	576.24
		Office - 407	75.63	814.08	-	75.63	814.08	366.34	109.66	1180.42
		Office - 408	41.51	446.81	-	41.51	446.81	201.07	60.19	647.88
		Office - 409	39.57	425.93	-	39.57	425.93	191.67	57.38	617.60
		Office - 410	41.85	450.47	-	41.85	450.47	202.71	60.68	653.19
		Office - 411	77.08	829.69	-	77.08	829.69	373.36	111.77	1203.05
		Office - 412	86.40	930.01	-	86.40	930.01	418.50	125.28	1348.51
		Office - 413	59.90	644.76	-	59.90	644.76	290.14	86.86	934.91
		Office - 414	47.04	506.34	-	47.04	506.34	227.8524	68.21	734.19
		TOTAL	805.36	8668.90	-	805.36	8668.90	3901.00	1167.77	12569.90



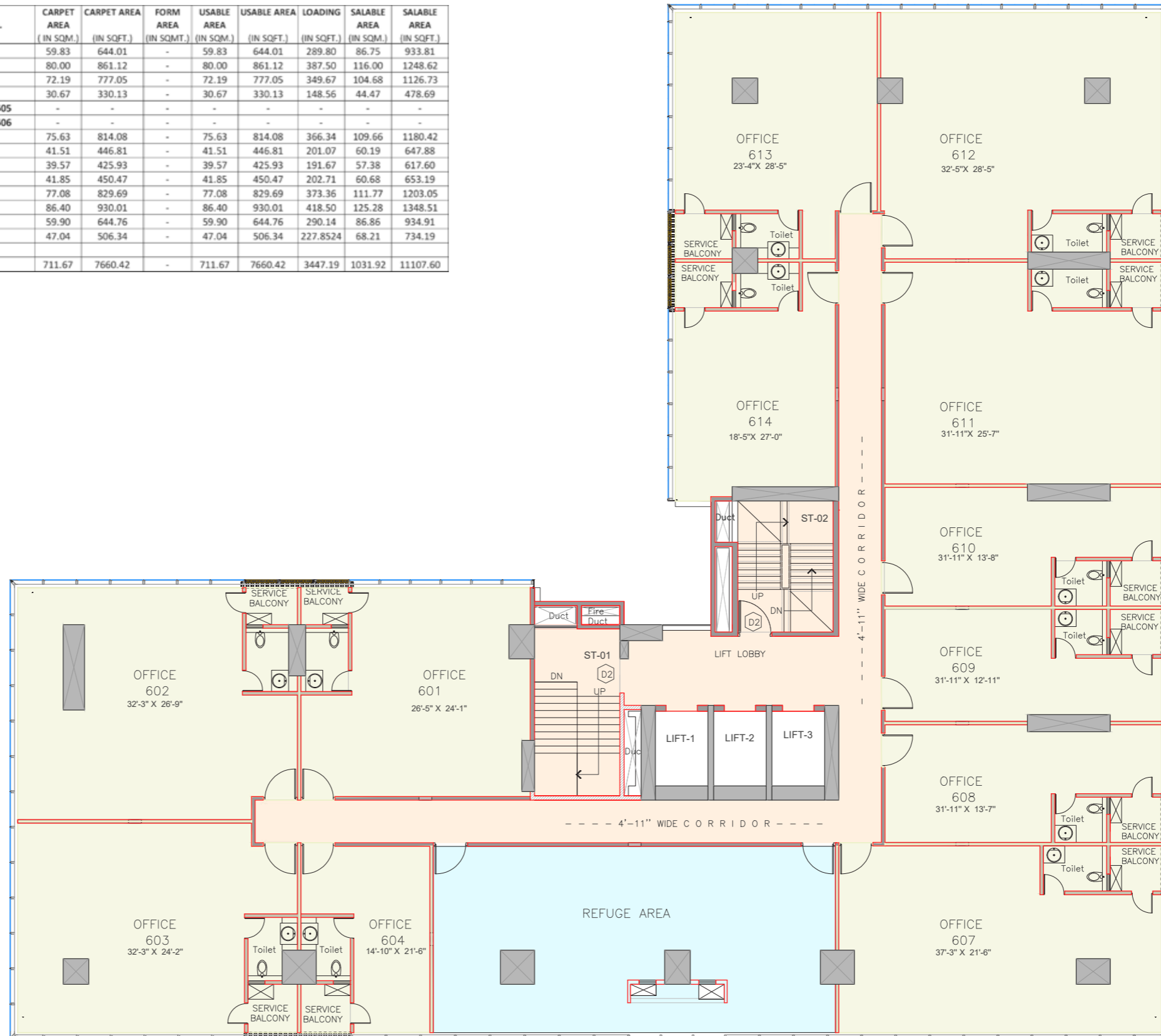
5TH FLOOR PLAN

Sr. No.	FLOOR	UNIT NO.	CARPET AREA (IN SQM.)	CARPET AREA (IN SQFT.)	FORM AREA (IN SQMT.)	USABLE AREA (IN SQM.)	USABLE AREA (IN SQFT.)	LOADING (IN SQFT.)	SALABLE AREA (IN SQM.)	SALABLE AREA (IN SQFT.)
6)	Fifth floor	Office - 501	59.83	644.01	-	59.83	644.01	289.80	86.75	933.81
		Office - 502	80.00	861.12	-	80.00	861.12	387.50	116.00	1248.62
		Office - 503	72.19	777.05	-	72.19	777.05	349.67	104.68	1126.73
		Office - 504	50.44	542.94	-	50.44	542.94	244.32	73.14	787.26
		Office - 505	37.00	398.27	-	37.00	398.27	179.22	53.65	577.49
		Office - 506	36.92	397.41	-	36.92	397.41	178.83	53.53	576.24
		Office - 507	75.63	814.08	-	75.63	814.08	366.34	109.66	1180.42
		Office - 508	41.51	446.81	-	41.51	446.81	201.07	60.19	647.88
		Office - 509	39.57	425.93	-	39.57	425.93	191.67	57.38	617.60
		Office - 510	41.85	450.47	-	41.85	450.47	202.71	60.68	653.19
		Office - 511+512+513	221.8	2387.46	-	221.80	2387.46	1074.35	321.61	3461.81
		Office - 514	55.19	594.07	-	55.19	594.07	267.3293	80.03	861.39
		TOTAL	811.93	8739.61	-	811.93	8739.61	3932.83	1177.30	12672.44



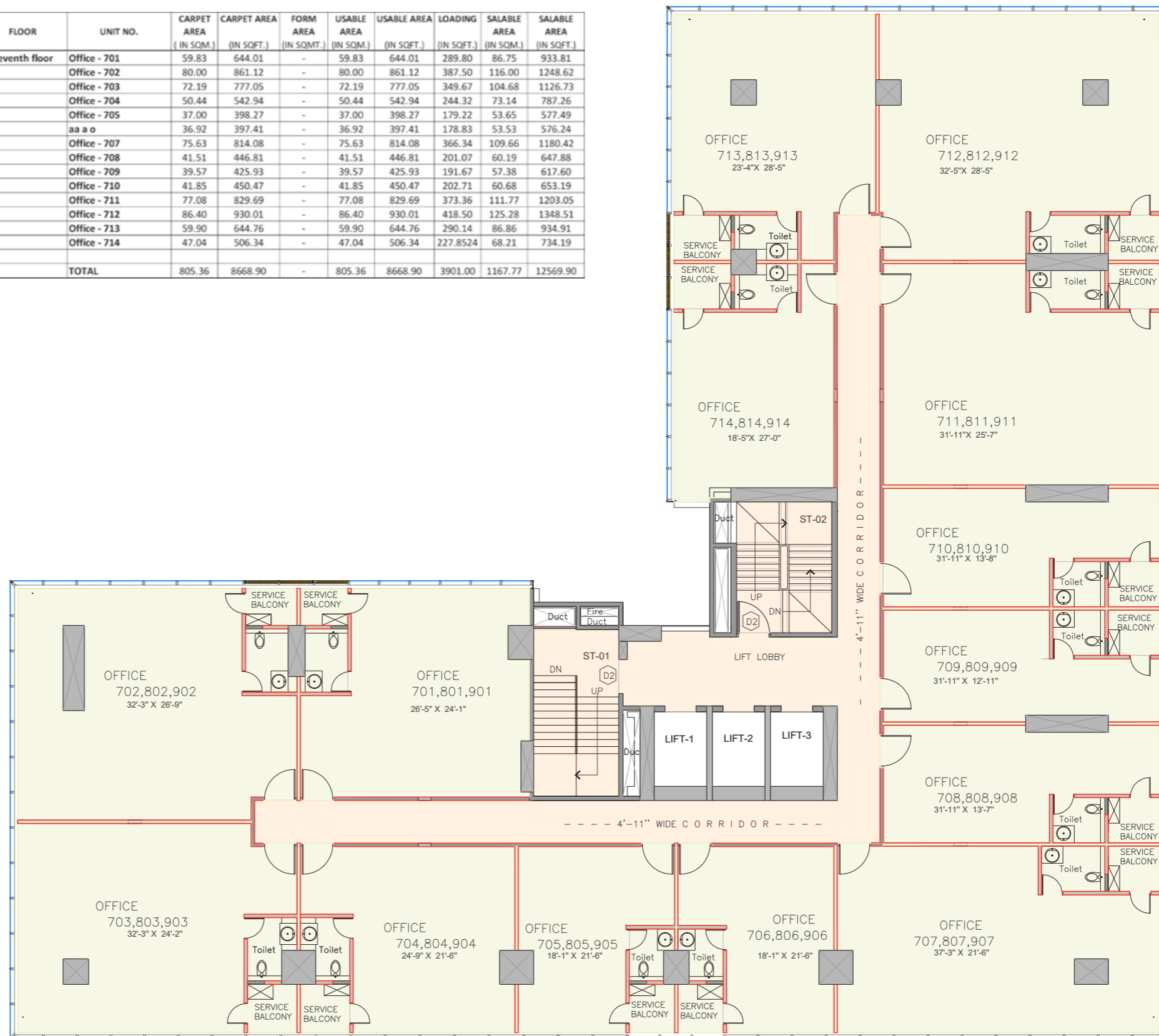
6TH (REFUGE) FLOOR PLAN

Sr. NO.	FLOOR	UNIT NO.	CARPET AREA (IN SQM.)	CARPET AREA (IN SQFT.)	FORM AREA (IN SQMT.)	USABLE AREA (IN SQM.)	USABLE AREA (IN SQFT.)	LOADING (IN SQFT.)	SALABLE AREA (IN SQM.)	SALABLE AREA (IN SQFT.)
7)	Sixth floor	Office - 601	59.83	644.01	-	59.83	644.01	289.80	86.75	933.81
		Office - 602	80.00	861.12	-	80.00	861.12	387.50	116.00	1248.62
		Office - 603	72.19	777.05	-	72.19	777.05	349.67	104.68	1126.73
		Office - 604	30.67	330.13	-	30.67	330.13	148.56	44.47	478.69
		Refuge Area - 605	-	-	-	-	-	-	-	-
		Refuge Area - 606	-	-	-	-	-	-	-	-
		Office - 607	75.63	814.08	-	75.63	814.08	366.34	109.66	1180.42
		Office - 608	41.51	446.81	-	41.51	446.81	201.07	60.19	647.88
		Office - 609	39.57	425.93	-	39.57	425.93	191.67	57.38	617.60
		Office - 610	41.85	450.47	-	41.85	450.47	202.71	60.68	653.19
		Office - 611	77.08	829.69	-	77.08	829.69	373.36	111.77	1203.05
		Office - 612	86.40	930.01	-	86.40	930.01	418.50	125.28	1348.51
		Office - 613	59.90	644.76	-	59.90	644.76	290.14	86.86	934.91
		Office - 614	47.04	506.34	-	47.04	506.34	227.8524	68.21	734.19
		TOTAL	711.67	7660.42	-	711.67	7660.42	3447.19	1031.92	11107.60



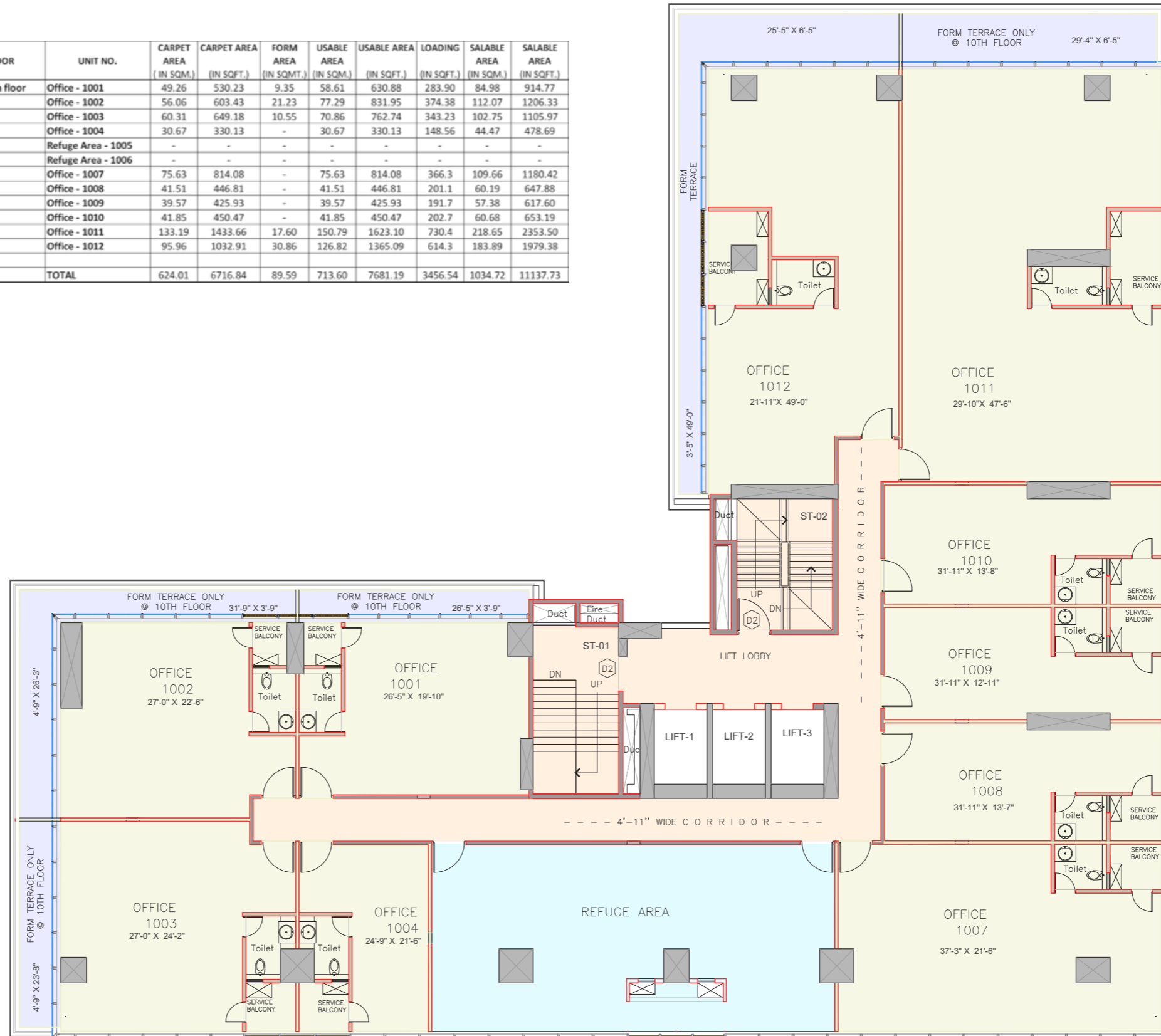
TYPICAL 7TH, 8TH & 9TH FLOOR PLAN

SR. NO.	FLOOR	UNIT NO.	CARPET AREA (IN SQM.)	CARPET AREA (IN SQFT.)	FORM AREA (IN SQMT.)	USABLE AREA (IN SQM.)	USABLE AREA (IN SQFT.)	LOADING (IN SQFT.)	SALABLE AREA (IN SQM.)	SALABLE AREA (IN SQFT.)
8)	Seventh floor	Office - 701	59.83	644.01	-	59.83	644.01	289.80	86.75	933.81
		Office - 702	80.00	861.12	-	80.00	861.12	387.50	116.00	1248.62
		Office - 703	72.19	777.05	-	72.19	777.05	349.67	104.68	1126.73
		Office - 704	50.44	542.94	-	50.44	542.94	244.32	73.14	787.26
		Office - 705	37.00	398.27	-	37.00	398.27	179.22	53.65	577.49
		aa a o	36.92	397.41	-	36.92	397.41	178.83	53.53	576.24
		Office - 707	75.63	814.08	-	75.63	814.08	366.34	109.66	1180.42
		Office - 708	41.51	446.81	-	41.51	446.81	201.07	60.19	647.88
		Office - 709	39.57	425.93	-	39.57	425.93	191.67	57.38	617.60
		Office - 710	41.85	450.47	-	41.85	450.47	202.71	60.68	653.19
		Office - 711	77.08	829.69	-	77.08	829.69	373.36	111.77	1203.05
		Office - 712	86.40	930.01	-	86.40	930.01	418.50	125.28	1348.51
		Office - 713	59.90	644.76	-	59.90	644.76	290.14	86.86	934.91
		Office - 714	47.04	506.34	-	47.04	506.34	227.8524	68.21	734.19
		TOTAL	805.36	8668.90	-	805.36	8668.90	3901.00	1167.77	12569.90



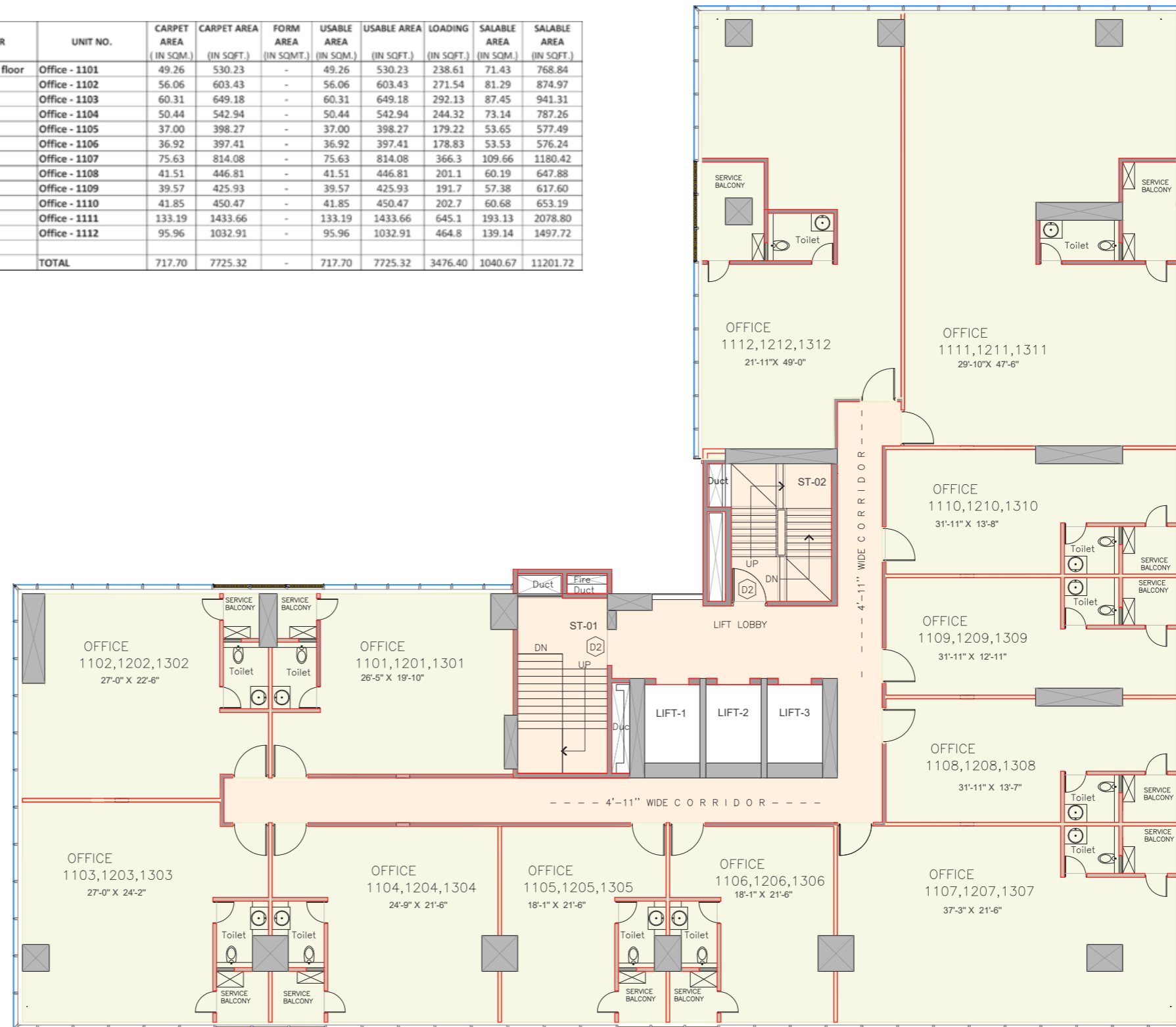
10TH (REFUGE) FLOOR PLAN

Sr. No.	FLOOR	UNIT NO.	CARPET AREA (IN SQM.)	CARPET AREA (IN SQFT.)	FORM AREA (IN SQMT.)	USABLE AREA (IN SQM.)	USABLE AREA (IN SQFT.)	LOADING (IN SQFT.)	SALABLE AREA (IN SQM.)	SALABLE AREA (IN SQFT.)
11)	Tenth floor	Office - 1001	49.26	530.23	9.35	58.61	630.88	283.90	84.98	914.77
		Office - 1002	56.06	603.43	21.23	77.29	831.95	374.38	112.07	1206.33
		Office - 1003	60.31	649.18	10.55	70.86	762.74	343.23	102.75	1105.97
		Office - 1004	30.67	330.13	-	30.67	330.13	148.56	44.47	478.69
		Refuge Area - 1005	-	-	-	-	-	-	-	-
		Refuge Area - 1006	-	-	-	-	-	-	-	-
		Office - 1007	75.63	814.08	-	75.63	814.08	366.3	109.66	1180.42
		Office - 1008	41.51	446.81	-	41.51	446.81	201.1	60.19	647.88
		Office - 1009	39.57	425.93	-	39.57	425.93	191.7	57.38	617.60
		Office - 1010	41.85	450.47	-	41.85	450.47	202.7	60.68	653.19
		Office - 1011	133.19	1433.66	17.60	150.79	1623.10	730.4	218.65	2353.50
		Office - 1012	95.96	1032.91	30.86	126.82	1365.09	614.3	183.89	1979.38
		TOTAL	624.01	6716.84	89.59	713.60	7681.19	3456.54	1034.72	11137.73



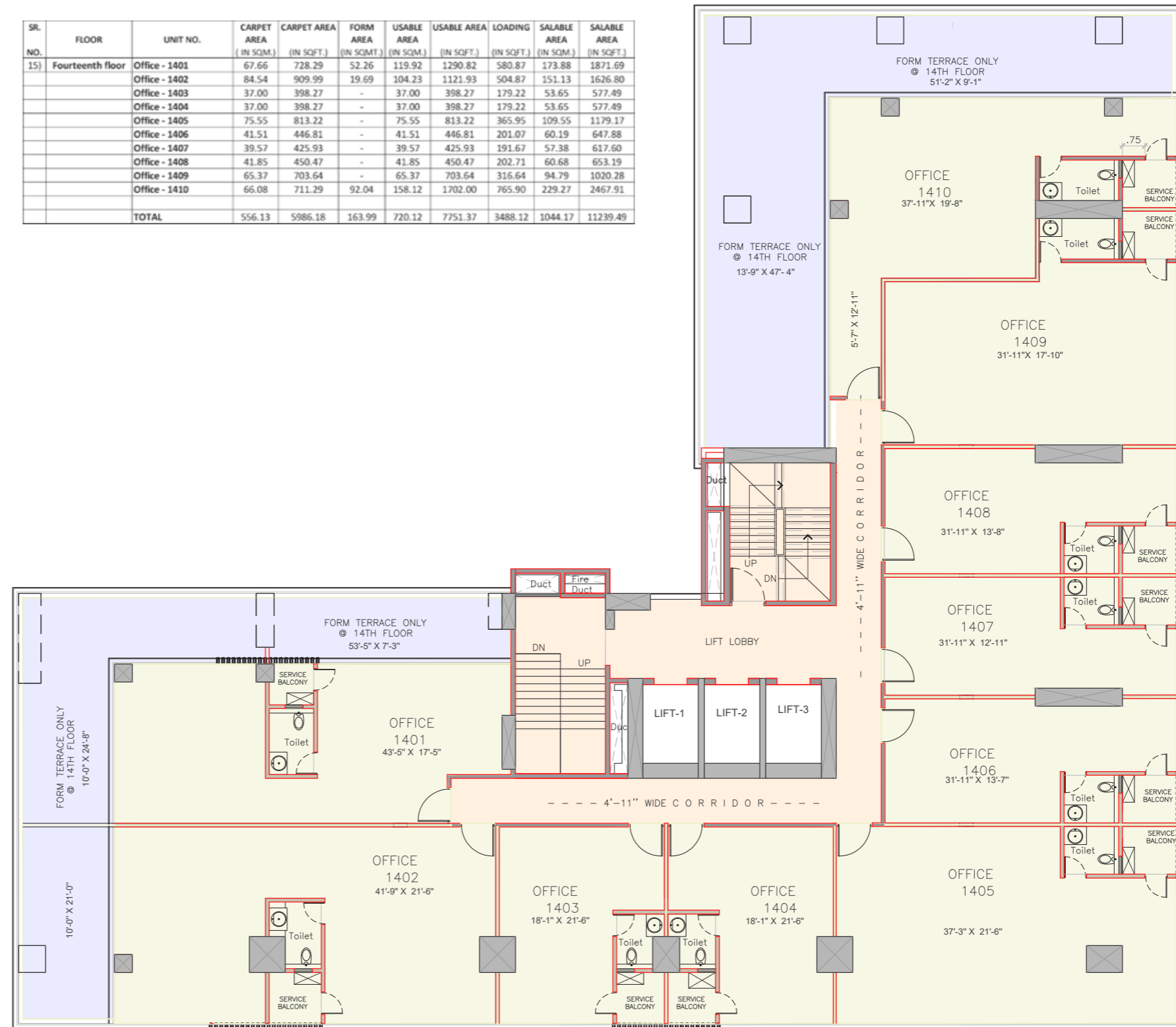
TYPICAL 11TH, 12TH & 13TH FLOOR PLAN

Sr. No.	FLOOR	UNIT NO.	CARPET AREA (IN SQM.)	CARPET AREA (IN SQFT.)	FORM AREA (IN SQMT.)	USABLE AREA (IN SQM.)	USABLE AREA (IN SQFT.)	LOADING (IN SQFT.)	SALABLE AREA (IN SQM.)	SALABLE AREA (IN SQFT.)
12)	Eleventh floor	Office - 1101	49.26	530.23	-	49.26	530.23	238.61	71.43	768.84
		Office - 1102	56.06	603.43	-	56.06	603.43	271.54	81.29	874.97
		Office - 1103	60.31	649.18	-	60.31	649.18	292.13	87.45	941.31
		Office - 1104	50.44	542.94	-	50.44	542.94	244.32	73.14	787.26
		Office - 1105	37.00	398.27	-	37.00	398.27	179.22	53.65	577.49
		Office - 1106	36.92	397.41	-	36.92	397.41	178.83	53.53	576.24
		Office - 1107	75.63	814.08	-	75.63	814.08	366.3	109.66	1180.42
		Office - 1108	41.51	446.81	-	41.51	446.81	201.1	60.19	647.88
		Office - 1109	39.57	425.93	-	39.57	425.93	191.7	57.38	617.60
		Office - 1110	41.85	450.47	-	41.85	450.47	202.7	60.68	653.19
		Office - 1111	133.19	1433.66	-	133.19	1433.66	645.1	193.13	2078.80
		Office - 1112	95.96	1032.91	-	95.96	1032.91	464.8	139.14	1497.72
		TOTAL	717.70	7725.32	-	717.70	7725.32	3476.40	1040.67	11201.72



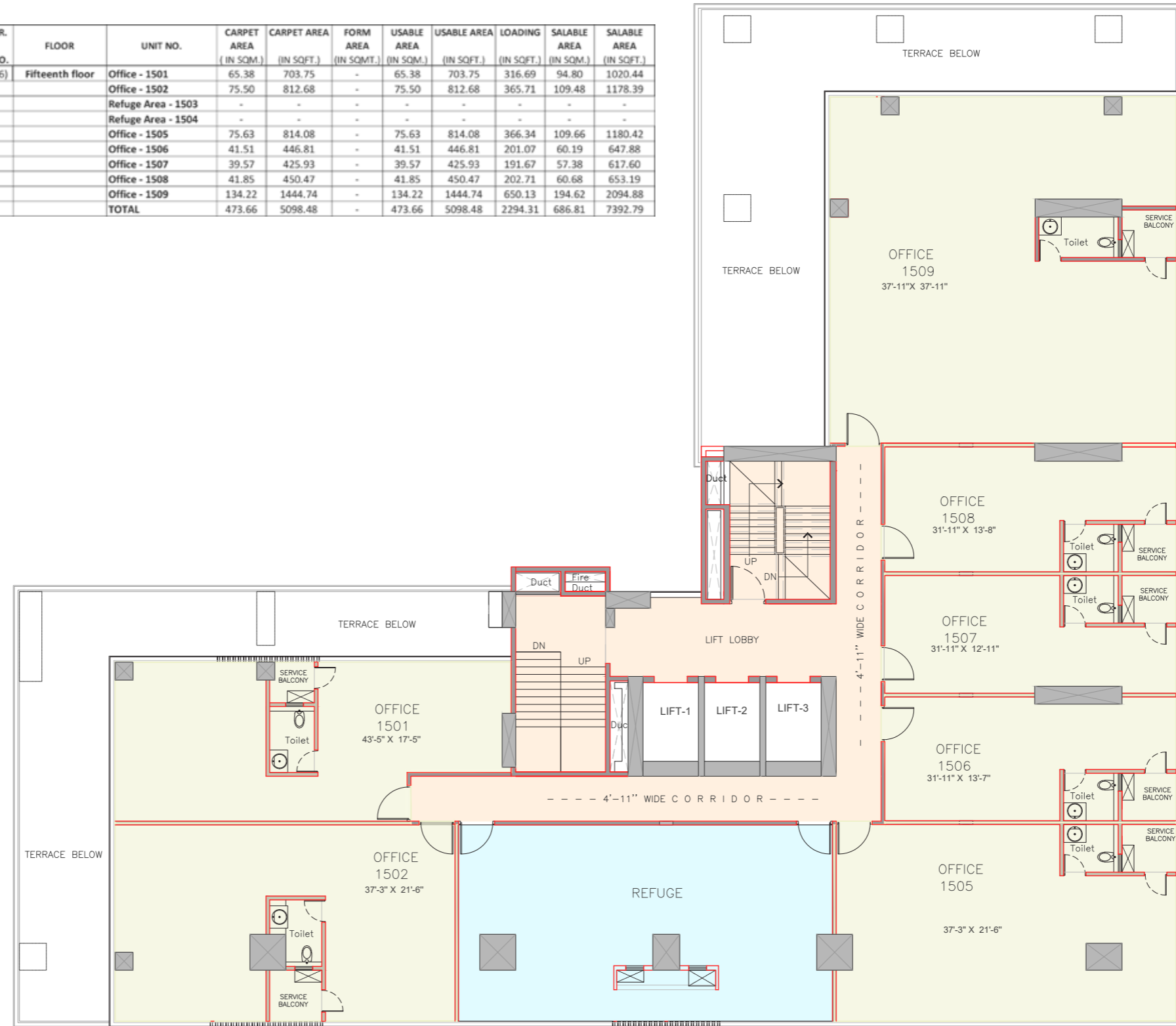
14TH FLOOR PLAN

SR. NO.	FLOOR	UNIT NO.	CARPET AREA (IN SQM.)	CARPET AREA (IN SQFT.)	FORM AREA (IN SQMT.)	USABLE AREA (IN SQM.)	USABLE AREA (IN SQFT.)	LOADING (IN SQFT.)	SALABLE AREA (IN SQM.)	SALABLE AREA (IN SQFT.)
15)	Fourteenth floor	Office - 1401	67.66	728.29	52.26	119.92	1290.82	580.87	173.88	1871.69
		Office - 1402	84.54	909.99	19.69	104.23	1121.93	504.87	151.13	1626.80
		Office - 1403	37.00	398.27	-	37.00	398.27	179.22	53.65	577.49
		Office - 1404	37.00	398.27	-	37.00	398.27	179.22	53.65	577.49
		Office - 1405	75.55	813.22	-	75.55	813.22	365.95	109.55	1179.17
		Office - 1406	41.51	446.81	-	41.51	446.81	201.07	60.19	647.88
		Office - 1407	39.57	425.93	-	39.57	425.93	191.67	57.38	617.60
		Office - 1408	41.85	450.47	-	41.85	450.47	202.71	60.68	653.19
		Office - 1409	65.37	703.64	-	65.37	703.64	316.64	94.79	1020.28
		Office - 1410	66.08	711.29	92.04	158.12	1702.00	765.90	229.27	2467.91
		TOTAL	556.13	5986.18	163.99	720.12	7751.37	3488.12	1044.17	11239.49



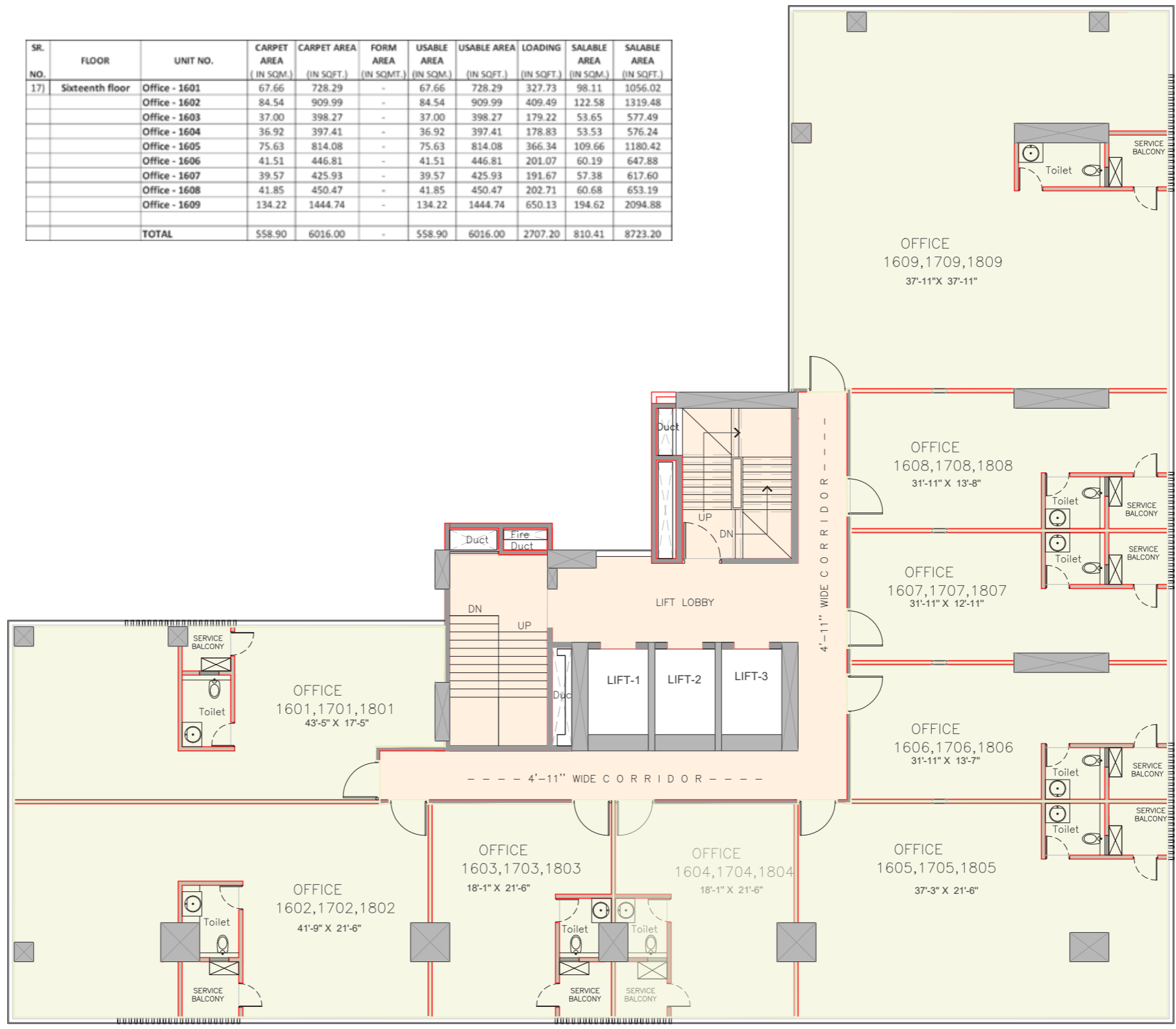
15TH (REFUGE) FLOOR PLAN

SR. NO.	FLOOR	UNIT NO.	CARPET AREA (IN SQM.)	CARPET AREA (IN SQFT.)	FORM AREA (IN SQMT.)	USABLE AREA (IN SQM.)	USABLE AREA (IN SQFT.)	LOADING (IN SQFT.)	SALABLE AREA (IN SQM.)	SALABLE AREA (IN SQFT.)	
16)	Fifteenth floor	Office - 1501	65.38	703.75	-	65.38	703.75	316.69	94.80	1020.44	
		Office - 1502	75.50	812.68	-	75.50	812.68	365.71	109.48	1178.39	
		Refuge Area - 1503	-	-	-	-	-	-	-	-	-
		Refuge Area - 1504	-	-	-	-	-	-	-	-	-
		Office - 1505	75.63	814.08	-	75.63	814.08	366.34	109.66	1180.42	
		Office - 1506	41.51	446.81	-	41.51	446.81	201.07	60.19	647.88	
		Office - 1507	39.57	425.93	-	39.57	425.93	191.67	57.38	617.60	
		Office - 1508	41.85	450.47	-	41.85	450.47	202.71	60.68	653.19	
		Office - 1509	134.22	1444.74	-	134.22	1444.74	650.13	194.62	2094.88	
		TOTAL	473.66	5098.48	-	473.66	5098.48	2294.31	686.81	7392.79	

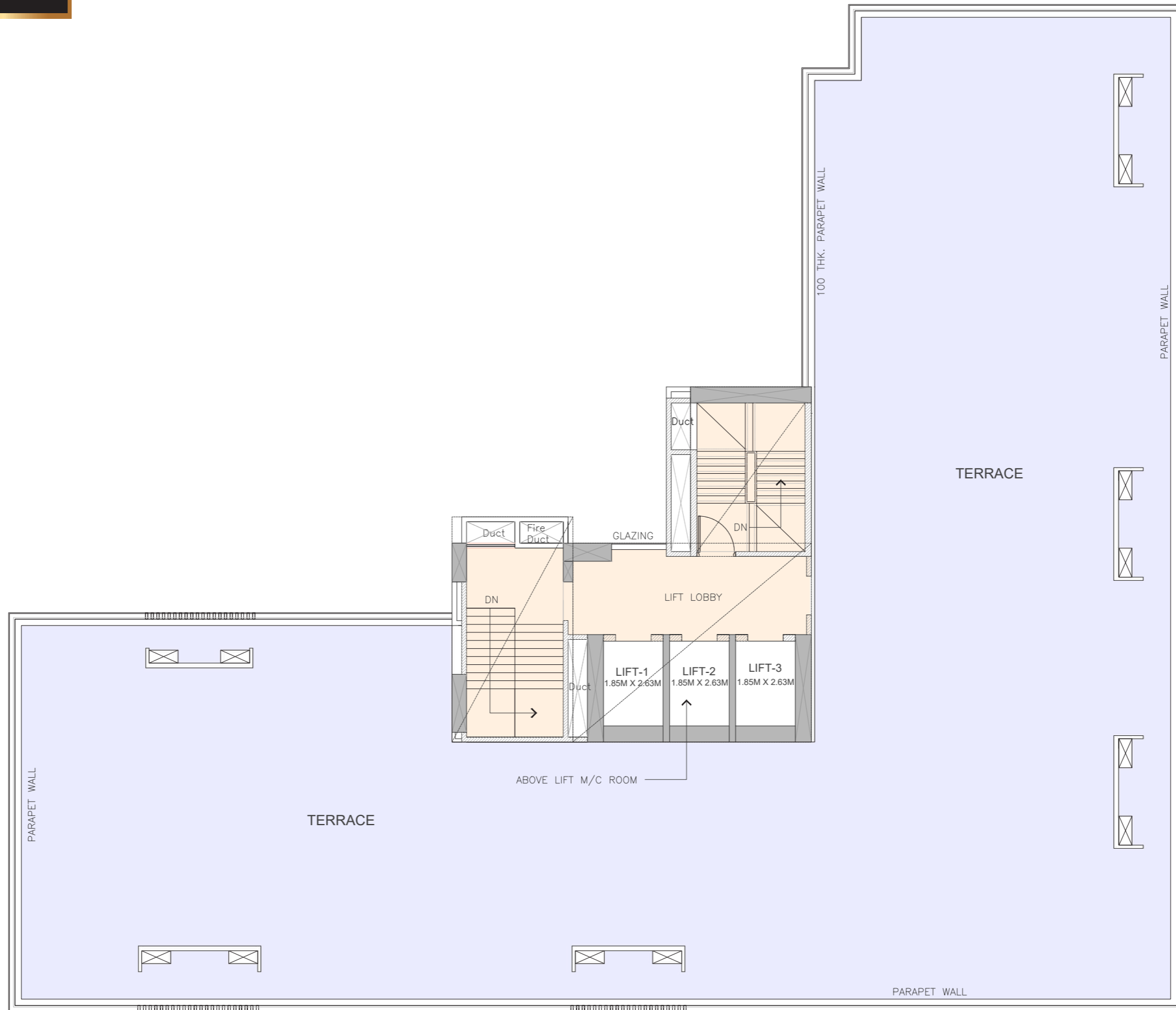


TYPICAL 16TH, 17TH & 18TH FLOOR PLAN

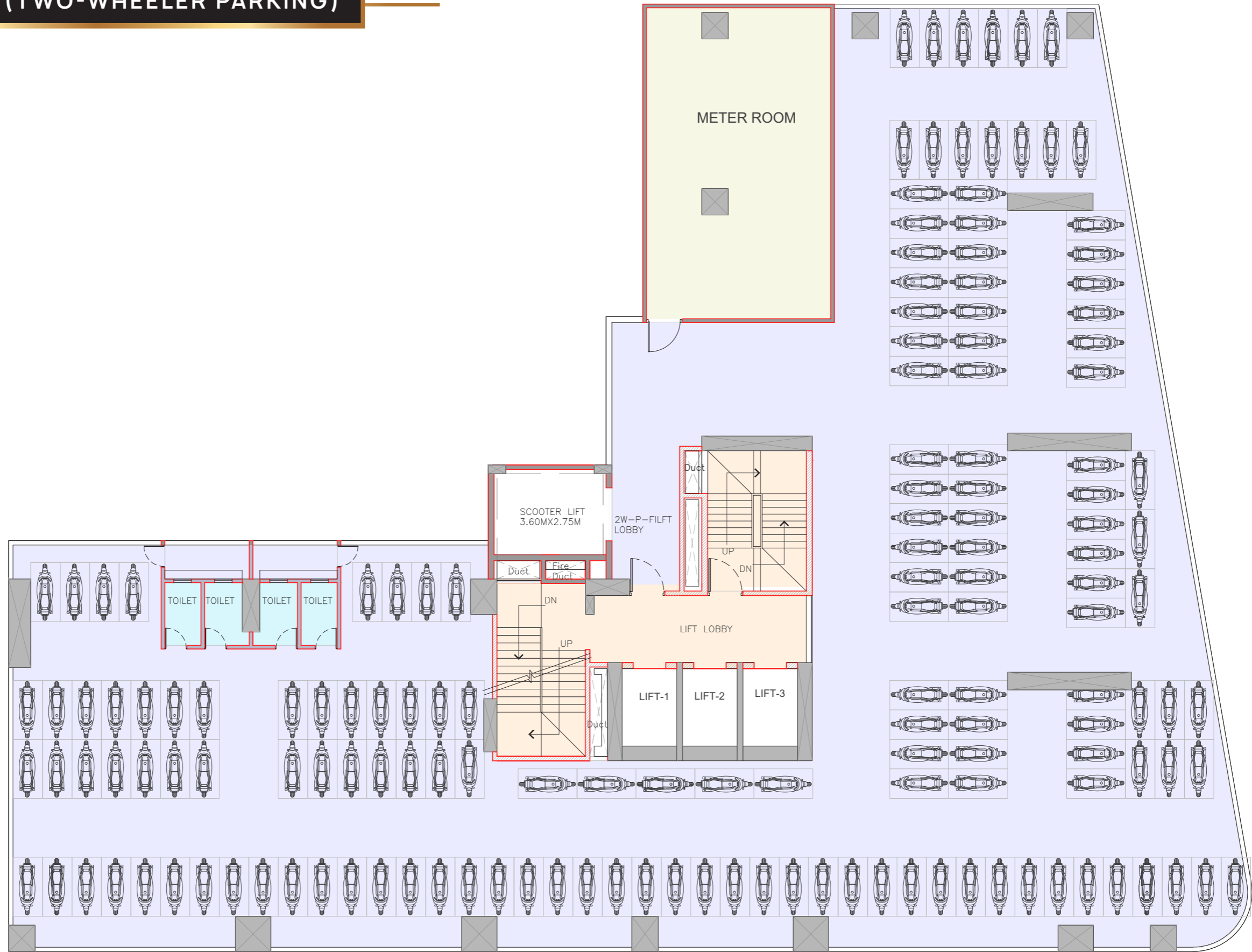
SR. NO.	FLOOR	UNIT NO.	CARPET AREA (IN SQM.)	CARPET AREA (IN SQFT.)	FORM AREA (IN SQMT.)	USABLE AREA (IN SQM.)	USABLE AREA (IN SQFT.)	LOADING (IN SQFT.)	SALABLE AREA (IN SQM.)	SALABLE AREA (IN SQFT.)
17)	Sixteenth floor	Office - 1601	67.66	728.29	-	67.66	728.29	327.73	98.11	1056.02
		Office - 1602	84.54	909.99	-	84.54	909.99	409.49	122.58	1319.48
		Office - 1603	37.00	398.27	-	37.00	398.27	179.22	53.65	577.49
		Office - 1604	36.92	397.41	-	36.92	397.41	178.83	53.53	576.24
		Office - 1605	75.63	814.08	-	75.63	814.08	366.34	109.66	1180.42
		Office - 1606	41.51	446.81	-	41.51	446.81	201.07	60.19	647.88
		Office - 1607	39.57	425.93	-	39.57	425.93	191.67	57.38	617.60
		Office - 1608	41.85	450.47	-	41.85	450.47	202.71	60.68	653.19
		Office - 1609	134.22	1444.74	-	134.22	1444.74	650.13	194.62	2094.88
		TOTAL	558.90	6016.00	-	558.90	6016.00	2707.20	810.41	8723.20



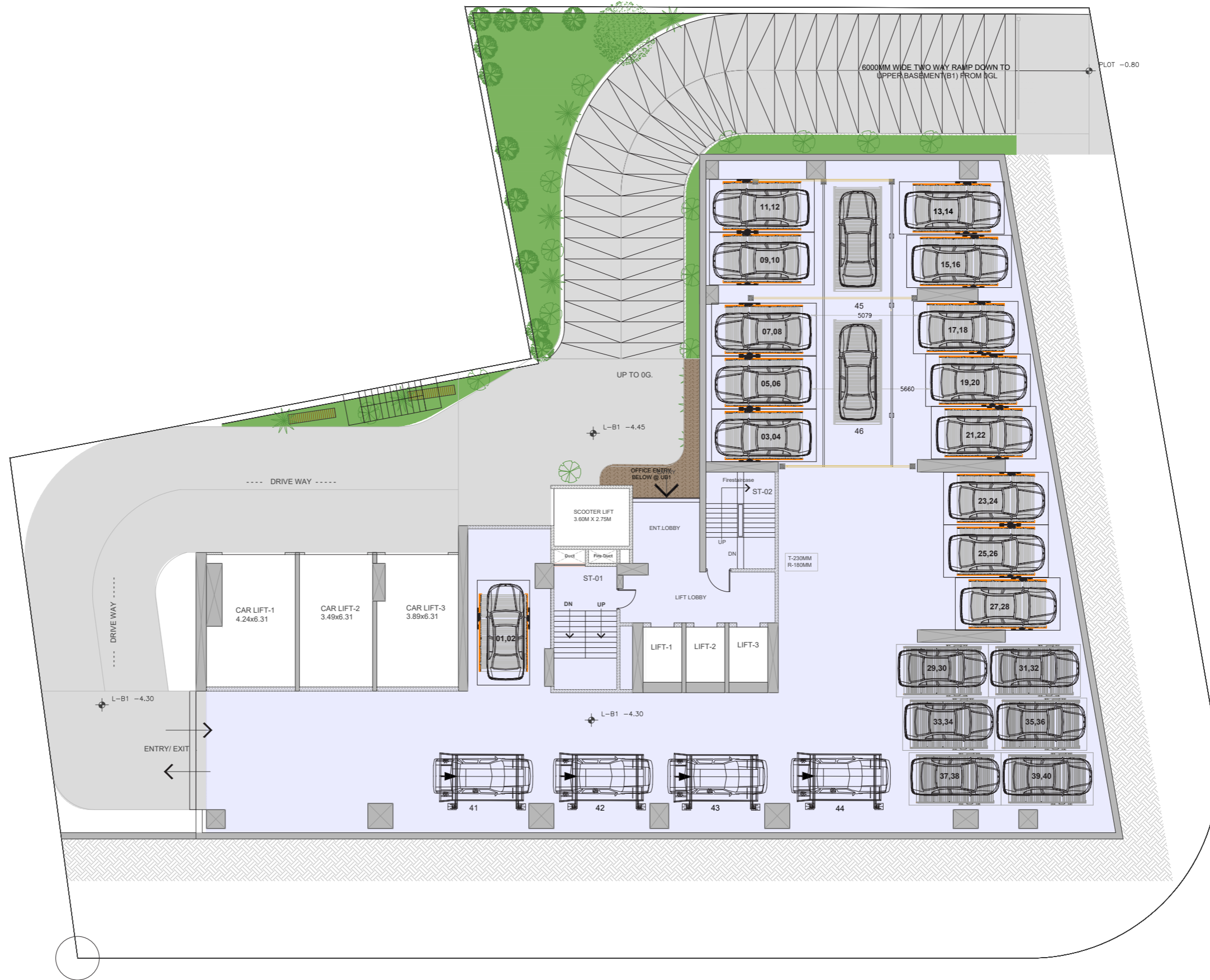
TERRACE FLOOR PLAN



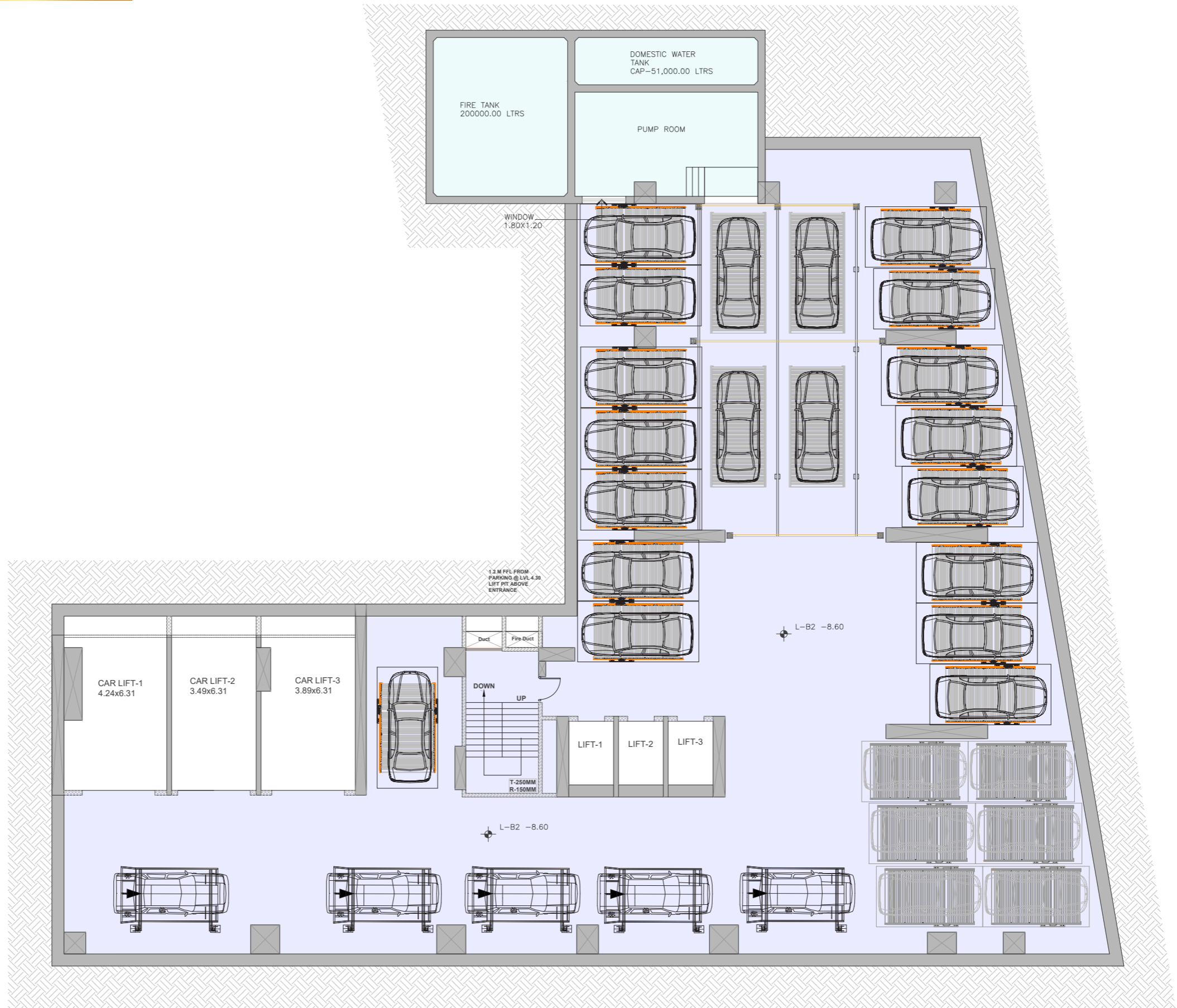
2ND FLOOR PLAN (TWO-WHEELER PARKING)



UPPER BASEMENT (B1) FLOOR PLAN

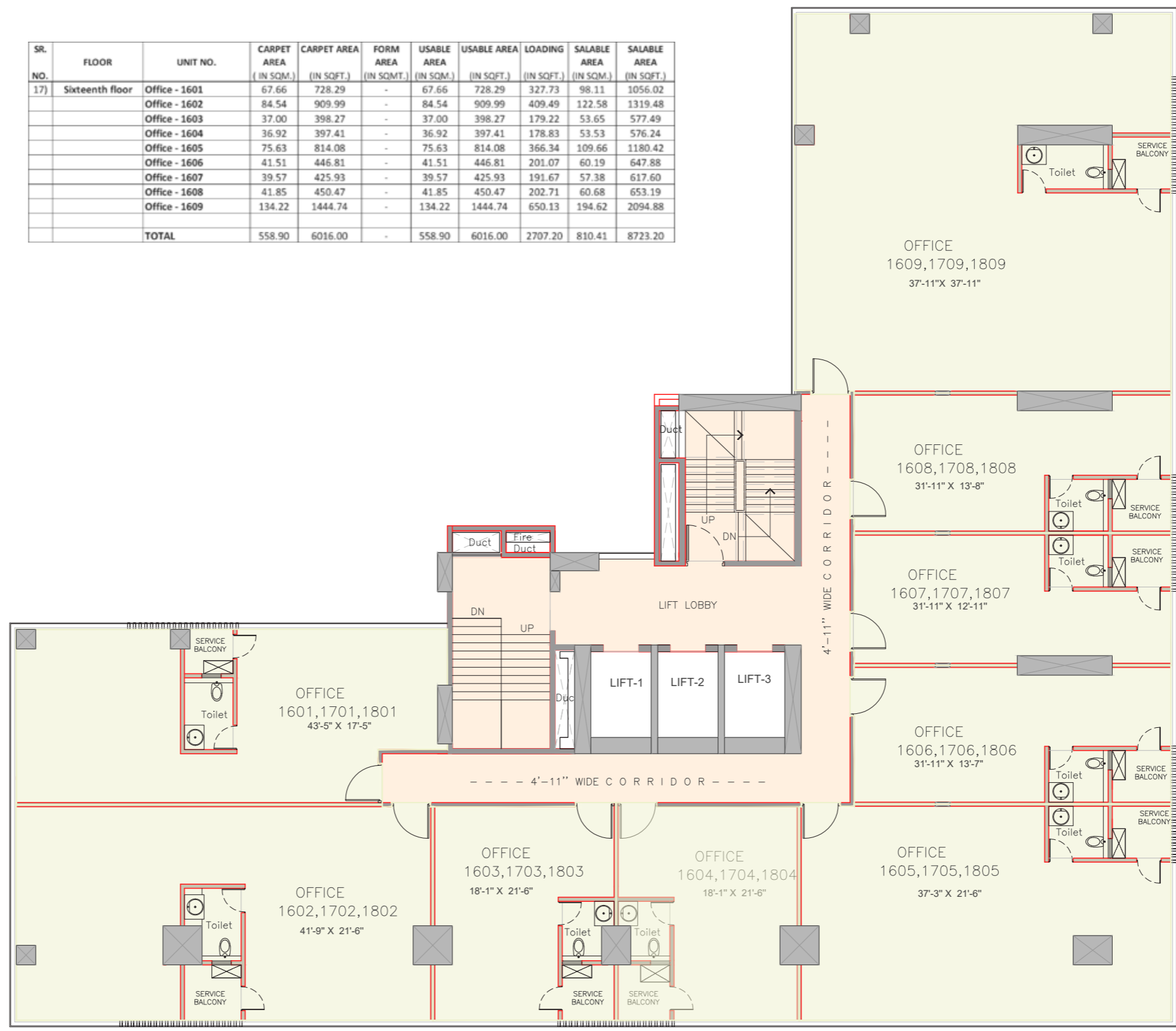


MIDDLE BASEMENT (B2) FLOOR PLAN



TYPICAL 16TH, 17TH & 18TH FLOOR PLAN

Sr. No.	FLOOR	UNIT NO.	CARPET AREA (IN SQM.)	CARPET AREA (IN SQFT.)	FORM AREA (IN SQMT.)	USABLE AREA (IN SQM.)	USABLE AREA (IN SQFT.)	LOADING (IN SQFT.)	SALABLE AREA (IN SQM.)	SALABLE AREA (IN SQFT.)
17)	Sixteenth floor	Office - 1601	67.66	728.29	-	67.66	728.29	327.73	98.11	1056.02
		Office - 1602	84.54	909.99	-	84.54	909.99	409.49	122.58	1319.48
		Office - 1603	37.00	398.27	-	37.00	398.27	179.22	53.65	577.49
		Office - 1604	36.92	397.41	-	36.92	397.41	178.83	53.53	576.24
		Office - 1605	75.63	814.08	-	75.63	814.08	366.34	109.66	1180.42
		Office - 1606	41.51	446.81	-	41.51	446.81	201.07	60.19	647.88
		Office - 1607	39.57	425.93	-	39.57	425.93	191.67	57.38	617.60
		Office - 1608	41.85	450.47	-	41.85	450.47	202.71	60.68	653.19
		Office - 1609	134.22	1444.74	-	134.22	1444.74	650.13	194.62	2094.88
		TOTAL	558.90	6016.00	-	558.90	6016.00	2707.20	810.41	8723.20



PROJECT BY



Mohanlal Bishnoi
BUILDERS & DEVELOPERS

OFFICE ADDRESS:

201, Montvert apex, Opp. Orchid School, Baner, Pune - 411045

SITE ADDRESS:

S.No 36/2, Banglore-Mumbai Highway, Near Supreme HQ, Baner, Pune- 411045.

sales@millenniumtower.in | +91 97667 28738 | www.millenniumtower.in

POWERED BY
SELLABILITY
UNLOCKING GROWTH

MAHARERA NO.: P52100023611 | <https://maharera.mahaonline.gov.in>
SELLABILITY MAHARERA NO.: A52100030468

